

FEBRUARY 2000

CORONADO ESTATES

SHEET 3 of 4

BEING A RE-PLAT OF TRACTS 67, 68, AND A PORTION OF TRACTS 57 AND 58, BOYNTON GARDENS, AS RECORDED IN PLAT BOOK 6, PAGE 32, PUBLIC RECORDS, PALM BEACH COUNTY, AND LYING IN SECTION 23, TOWNSHIP 45 SOUTH, RANGE 42 EAST, PALM BEACH COUNTY, FLORIDA.

0691-001

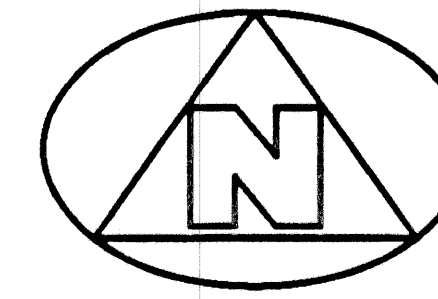
117

SEE SHEET 4 OF 4
MATCH LINE

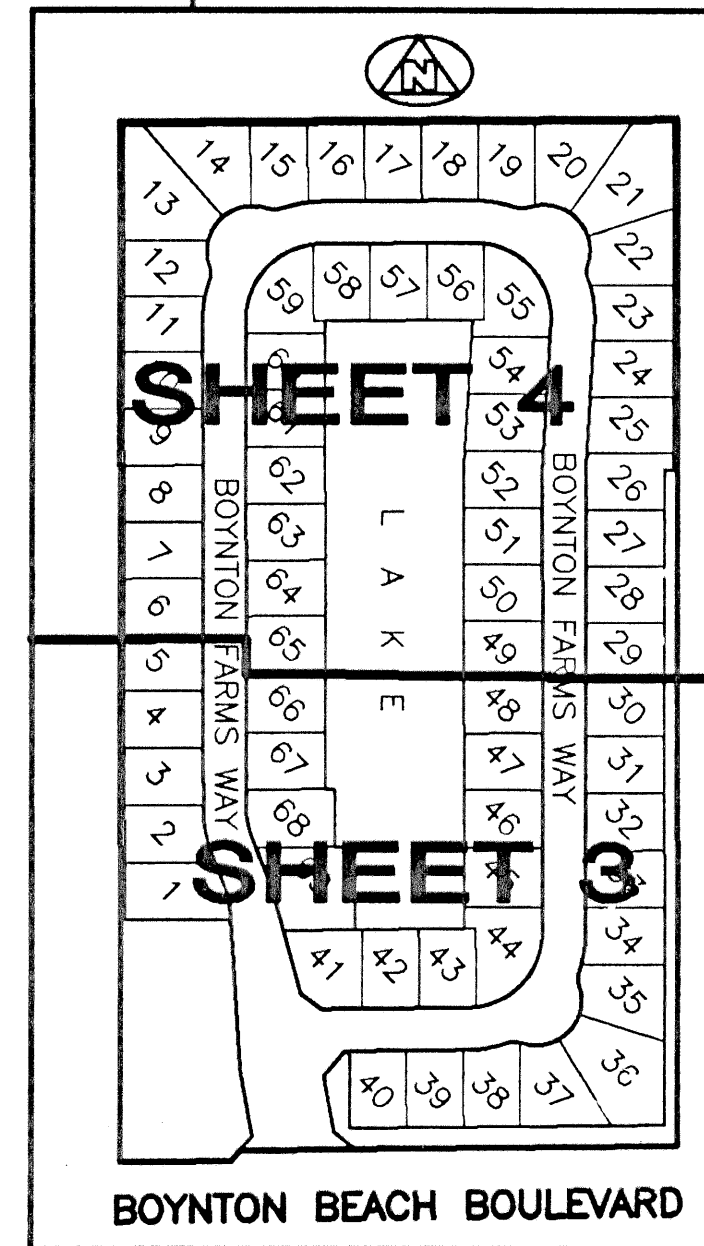
SEE SHEET 4 OF 4
MATCH LINE

SUN VALLEY I-A P.U.D.
(PLAT BOOK 56, PAGE 126)

SUN VALLEY I P.U.D.
(PLAT BOOK 55, PAGE 45)



GRAPHIC SCALE
(IN FEET)
SCALE: 1" = 40'



KEY MAP
NOT TO SCALE

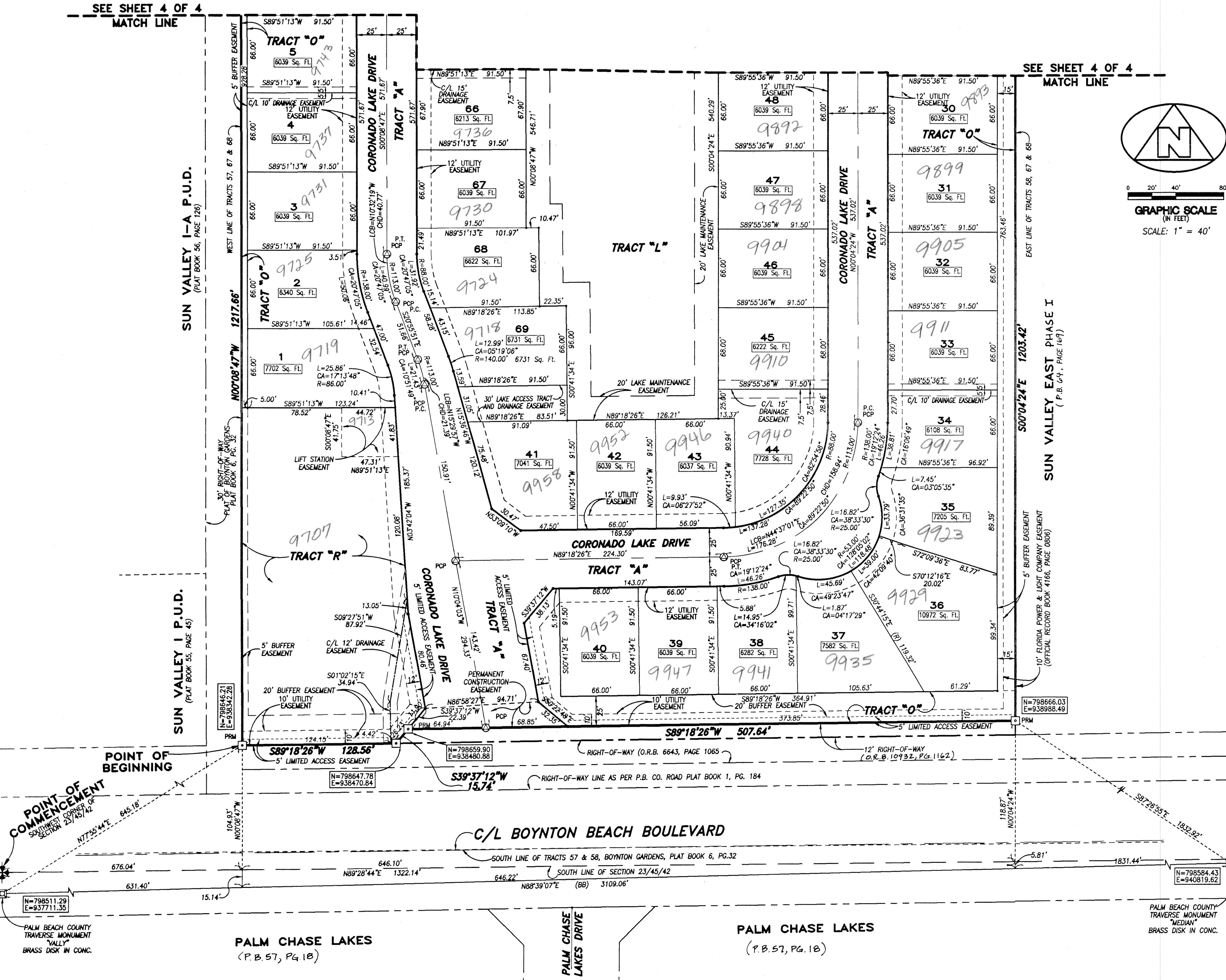
SURVEYOR'S NOTES AND LEGEND:

1. LINES WHICH INTERSECT CURVES ARE NOT RADIAL, UNLESS OTHERWISE NOTED.
2. C/L DENOTES CENTERLINE
3. (R) DENOTES RADIAL LINE
4. PRM DENOTES A SET #2424 PERMANENT REFERENCE MONUMENT (P.R.M.)
5. PCP DENOTES A SET #2424 PERMANENT CONTROL POINT (P.C.P.)
6. PRM DENOTES A FOUND #2424 PERMANENT REFERENCE MONUMENT (P.R.M.)
7. PCP DENOTES A FOUND #2424 PERMANENT CONTROL POINT (P.C.P.)
8. F.P.L. DENOTES FLORIDA POWER & LIGHT
9. CONC. DENOTES CONCRETE
10. O.R.B., PG. DENOTES OFFICIAL RECORDS BOOK AND PAGE
11. P.T. DENOTES POINT OF TANGENCY
12. P.C. DENOTES POINT OF CURVATURE
13. O.R.B. DENOTES OFFICIAL RECORDS BOOK
14. SQ. FT. DENOTES SQUARE FEET
15. LCB DENOTES LONG CHORD BEARING
16. CHD DENOTES CHORD DISTANCE
17. N=799863.90 DENOTES NORTHING COORDINATE
18. E=799863.90 DENOTES EASTING COORDINATE
19. (BB) DENOTES BASE BEARING, THE BASE BEARING, AS SHOWN HEREON, IS BASED ON THE BEARING OF N89°39'07"E BETWEEN PALM BEACH COUNTY TRAVERSE MONUMENTS "VALLEY" AND "MEDIAN"

THIS INSTRUMENT WAS PREPARED BY WM. R. VAN CAMPEN, R.L.S., IN AND FOR THE OFFICES OF BENCH MARK LAND SURVEYING & MAPPING, INC., 4152 WEST BLUE HERON BOULEVARD, SUITE 121, RIVIERA BEACH, FLORIDA

BENCH MARK LAND SURVEYING & MAPPING, INC.
 4152 W. BLUE HERON BOULEVARD • SUITE 121
 RIVIERA BEACH • FLORIDA 33404
 PHONE: (561) 848-2102 • L.B. 2171 • FAX: (561) 844-9659
 EMAIL: bmlsm@aol.com WEB: http://members.aol.com/bmlsm

RECORD PLAT	
CORONADO ESTATES	
DWN	D.J.W.
FB	DATE 2-01-00
FILE P221-A.dwg	WO.# P221
SCALE 1" = 40'	SHEET 3 OF 4



PLAT BOOK 57, PAGE 18
 FLOOD ZONE
 ZONING DISTRICT
 ZIP CODE 33404
 TAZ 444
 PUD NAME
 PALM BEACH COUNTY TRAVERSE MONUMENT "VALLEY" BRASS DISK IN CONC.

PALM CHASE LAKES
(P.B. 57, PG. 18)

PALM CHASE LAKES
(P.B. 57, PG. 18)

PALM BEACH COUNTY TRAVERSE MONUMENT "MEDIAN" BRASS DISK IN CONC.